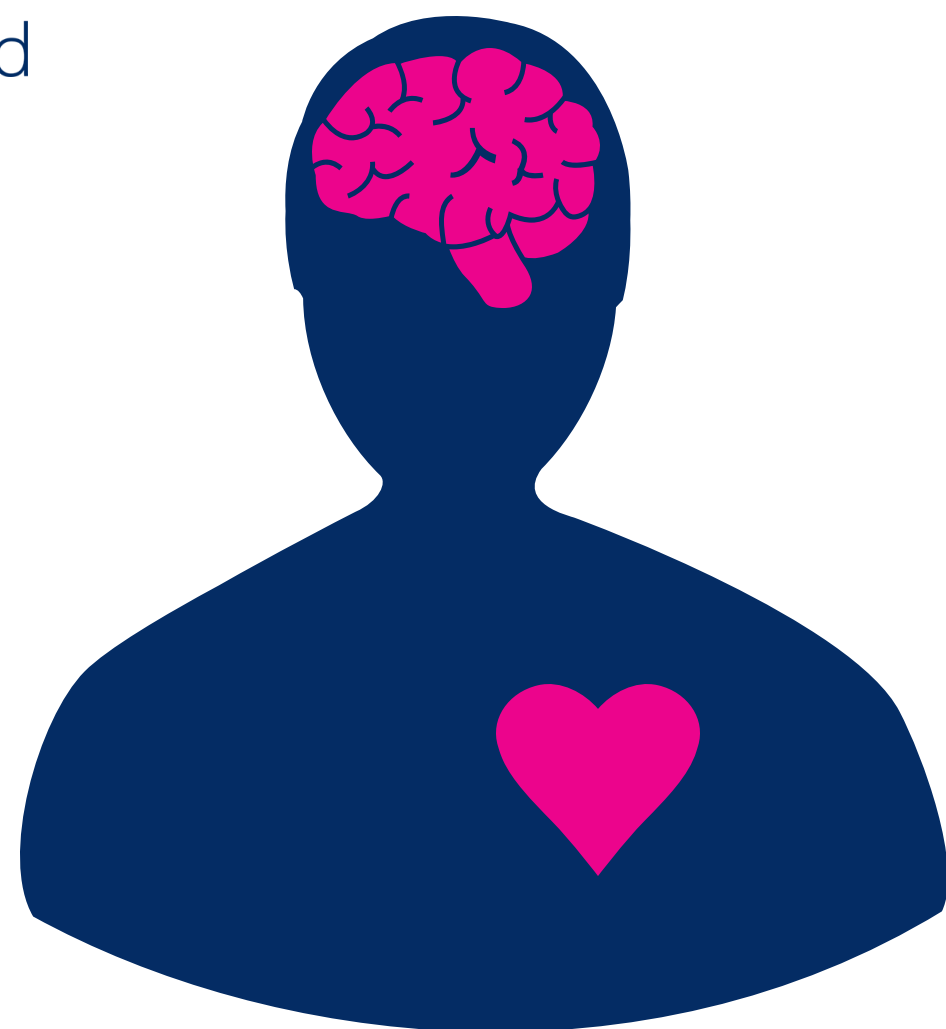


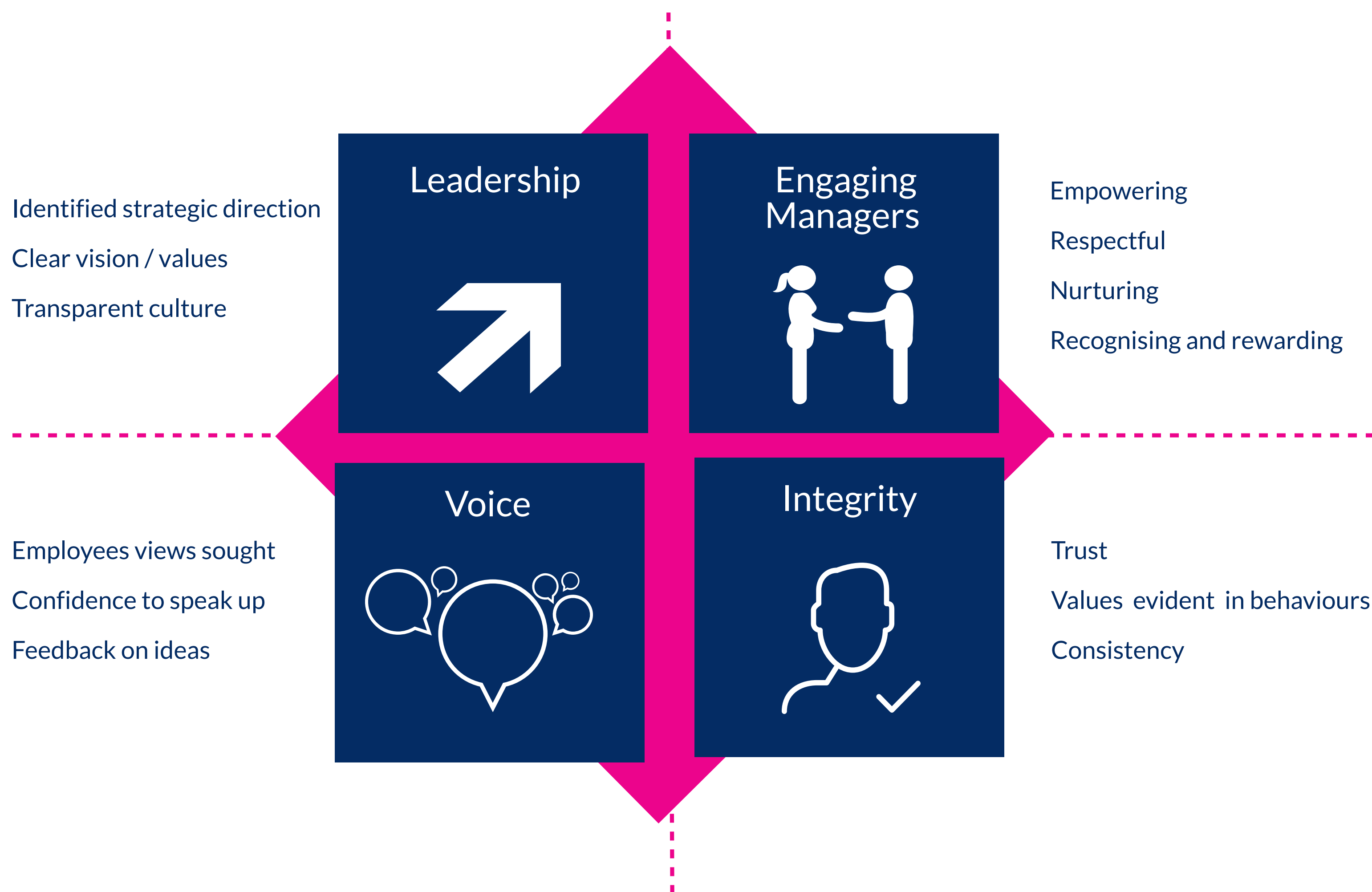
Supporting the public sector workforce to thrive and deliver for residents



Employee Engagement

- Its about how you think
- Its about how you feel
- Its about how you act

Enablers of employee engagement





Supporting the public sector workforce to thrive and deliver for residents

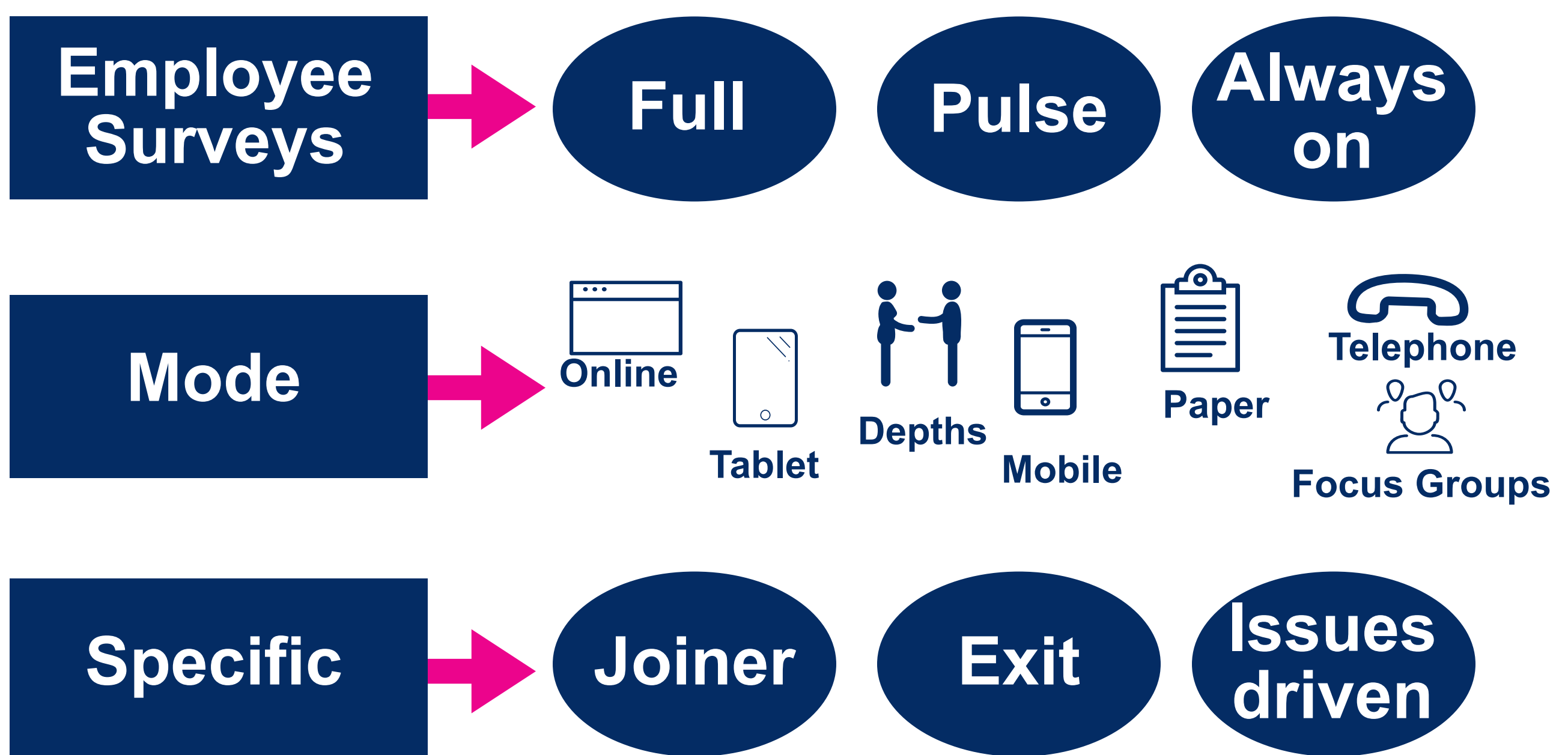
More than ever those working in local authorities are required to be resilient, collaborative and creative, with a shared sense of purpose to deliver for their residents. But such behaviours rarely develop without key building blocks such as:

- Clear and consistent communication of the organisation's vision
- Strong and supportive line management
- Employees feeling confident to innovate and challenge the status quo
- Employees feeling valued and recognised for their efforts and achievements

BMG Research has been delivering employee engagement surveys for over 15 years and over this time has built up a wealth of experience of exploring and measuring these key building blocks. Our experience includes working with UK local authorities, social landlords, central government and regulatory bodies.

Our experience covers the delivery of annual surveys as well as ad-hoc and pulse / temperature check surveys as well as qualitative research. Recent clients include:

- The London Boroughs of Tower Hamlets, Islington, Southwark, Brent and Lewisham;
- Local authorities such as Suffolk County Council, Thurrock Council and Walsall Council;
- House of Commons & Kew Gardens.



For more information on how BMG Research can support your information needs please contact: Steve Handley (Research Director) 0121 333 6006
steve.handley@bmgresearch.co.uk or visit www.bmgresearch.co.uk